

# Faroe Marine Research Institute (FAMRI)

Marita Rasmussen, director

A white bird, possibly a booby, is captured in mid-flight against a deep blue sky with wispy white clouds. The bird's wings are spread wide, revealing black feathers on the tips. It has a long, pointed beak and a small blue patch around its eye. The background below the bird is a blurred blue surface, likely water, with bokeh light effects.

**About us**

# Autonomous public institution



## Research

Ecosystems and  
ocean climate

Resources and  
sustainable  
management



## Communication

Peer-reviewed  
articles

The people



## Recommendation

Recommendation to the Faroese government on  
local, bilateral and multi lateral fish stocks



Staff





# Havstovan (FAMRI)



36 **staff**



Administration

Research

Tech.

PhD students

# Jákup Sverri



16 **staff**



Crew



# Organization

A high-angle photograph of a ship's deck, likely a fishing vessel, showing various pieces of equipment. In the foreground, there are several large orange buoys arranged in rows, some connected by chains. Coils of black cable are scattered across the wooden deck. A large orange spherical object, possibly a buoy or a part of a fishing net, is visible in the lower left. Two workers in safety gear are present: one in a bright yellow jacket and red pants, and another in a yellow jacket and white helmet. The background shows more equipment, including green nets and wooden chairs, and the ship's white structure.



Resource  
department



Environmental  
department



Technical  
department



Management



Marine mammals  
group





A large, modern building with a grass-covered roof and a stone base, situated on a rocky hillside. The building has multiple floors with large windows and a prominent stone wall on the right side. The foreground features large, dark rocks and green vegetation. The background shows a clear blue sky and distant hills.

# Infrastructure

Nóatún 1



# Jákup Sverri

Our pride and joy







# R/V Jákup Sverri



Length 54.4 m  
Width 13.6 m



Crew 13  
Researchers 12



## Details

Multipurpose Research Vessel, Polar cat. C.

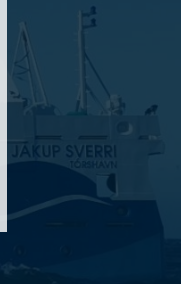
Silent-R propulsion, Tier-III compliant

Fishery research/Benthic and pelagic surveys Acoustics: *Fisheries Science, Bathymetry, Current, Seismics, USBL (HiPAP)*

Hydrography/environment: *CTD, WP2, Bongo, GULF, Video-plankton recorder etc. Vessel-mounted ADCP.*

Developed by MEST and FAMRI, tailormade research platform for FO nearshore and high seas

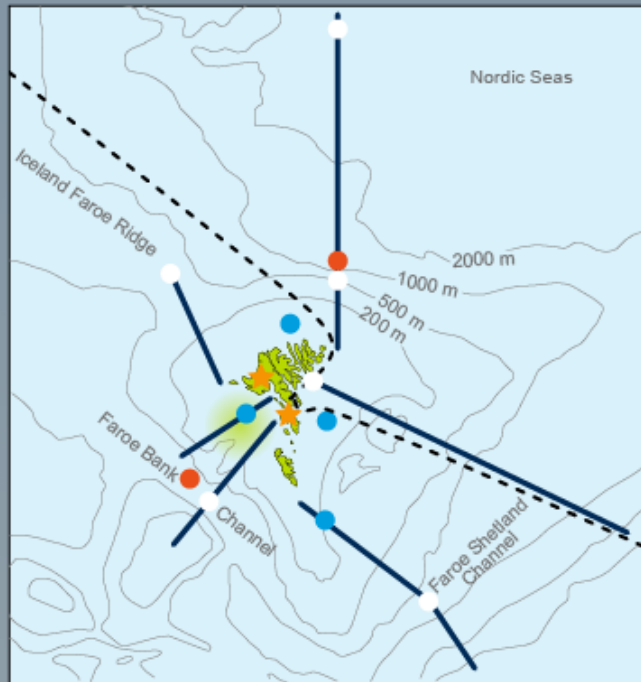
MARINE RESEARCH  
INSTITUTE



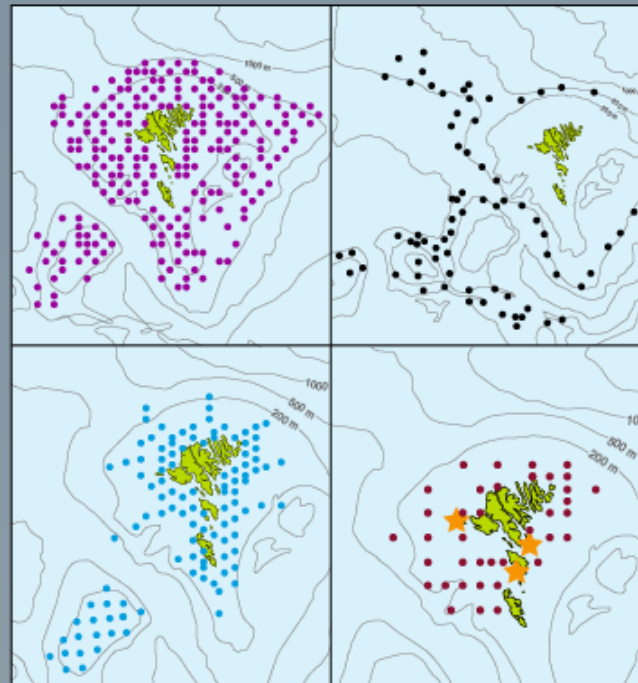




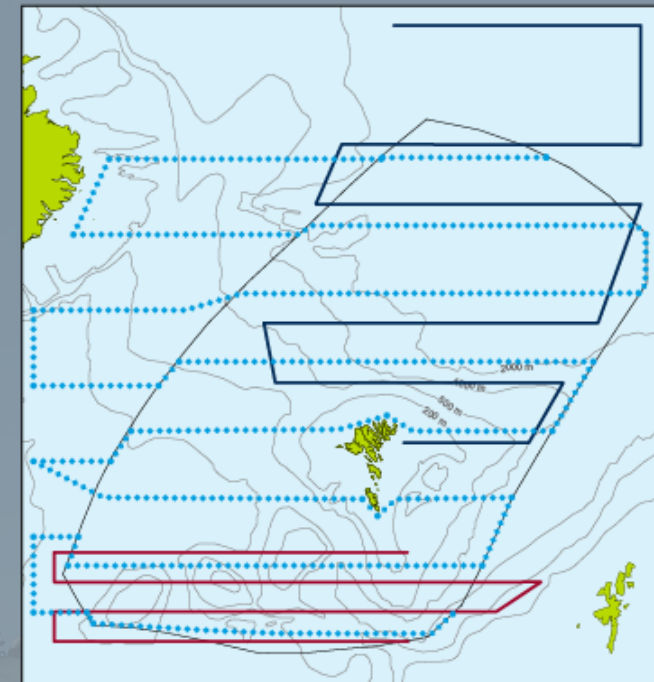
# Monitoring



- Hydrographic Standard Section
- Current Meter Moorings
- Temperature Buoys
- ★ Coastal Stations
- Standard Chemistry Stations
- - Typical track for "Norröna"
- High Phytoplankton Concentration



- Demersal Fish Survey
- 0-Group Survey
- Deep Sea Fish Survey
- Biological Oceanography
- ★ Seabird Coastal Stations



- Blue whiting survey (IBWSS)
- Ecosystem survey (IESNS)
- ... Ecosystem summer survey (IESSNS)



A large whale tail is seen breaching the ocean surface, creating a massive splash of white water. In the upper left corner, a seagull is captured in flight against the blue sky. The ocean is a deep blue with visible ripples and waves.

**Thank you**







